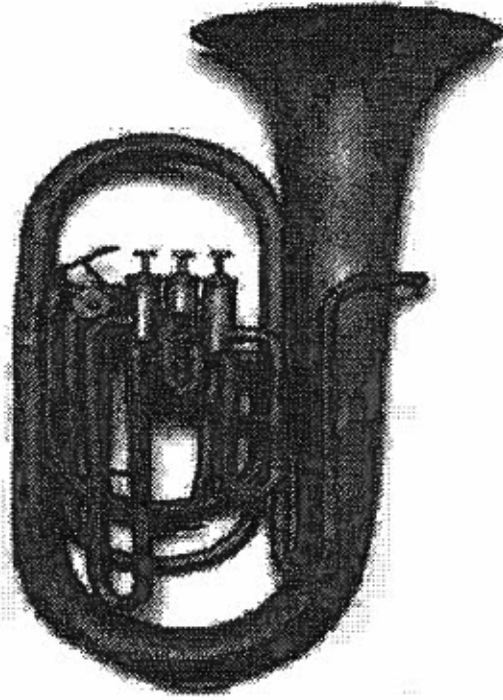


Name \_\_\_\_\_

Band \_\_\_\_\_

# Baritone



# Euphonium B.C. Fingering Chart

(Non Compensating)

Notes on gray background are pedal tones.

A $\sharp$	B $\flat$	B	C	C $\sharp$	D $\flat$	D
Open		1 2 3 4 (lip down)	1 2 3 4	1 3 4		1 2 4

D $\sharp$	E $\flat$	E	F	F $\sharp$	G $\flat$	G	G $\sharp$	A $\flat$
1 4 or 1 2 4		2 4 or 1 2 3	4 or 1 3	2 3		1 2 or 3		1

A	A $\sharp$	B $\flat$	B	C	C $\sharp$	D $\flat$	D
2	Open		2 4 or 1 2 3	4 or 1 3		2 3	1 2 or 3

D $\sharp$	E $\flat$	E	F	F $\sharp$	G $\flat$	G	G $\sharp$	A $\flat$
1		2	Open	2 3		1 2 or 3		1

A	A $\sharp$	B $\flat$	B	C	C $\sharp$	D $\flat$
2	Open		1 2 or 3	1		2 or 2 3

D	D $\sharp$	E $\flat$	E	F	F $\sharp$	G $\flat$
Open or 1 2		1	2 or 1 2 3	Open or 4 or 1 3		2 3

G	G $\sharp$	A $\flat$	A	A $\sharp$	B $\flat$	B	C
1 2 or 3		1	2	Open		1 2	1

(When more than one fingering is shown, the first is the most common.)

# Trombone/Baritone - Junior High All-Region Scales

Concert C



Concert F



Concert Bb



Concert Eb



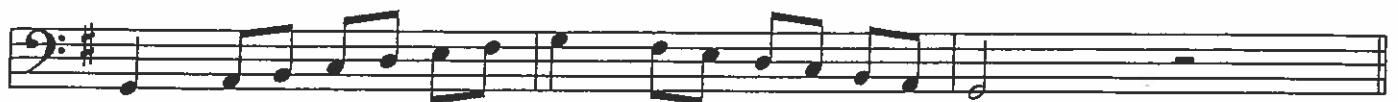
Concert Ab



Concert Db



Concert G



Chromatic



Baritone



10



18



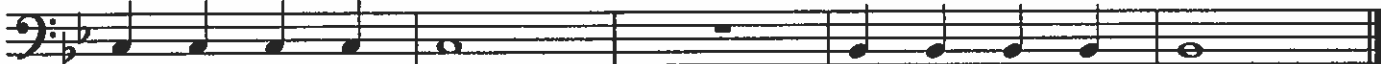
26



34



39



# Articulation Exercises

## Articulations: A Study in Styles

Four connected quarter-notes (tenuto). The sound of one note "touches" the next note.

Four quarter-notes in "lifted" style. The attack is the same as tenuto, but the end of the note is tapered.

Four quarter-notes "lifted and short" (staccato). Separated and detached (half full value).



Eighth-notes in connected style.

Eighth-notes in lifted and short style.



Eighth-note triplets in connected style.

Eighth-note triplets in a detached style (bounced).



Sixteenth-notes in a connected style.



## Articulation Exercise on Concert F



# Long Tones

## Concert F Descending

1

Exercise 1 consists of two staves of music in bass clef with a common time signature. The first staff contains measures 1 through 7, and the second staff contains measures 8 through 14. The notes are: 1 (F), 2 (E), 3 (D), 4 (C), 5 (B), 6 (A), 7 (G), 8 (F), 9 (E), 10 (D), 11 (C), 12 (B), 13 (A), 14 (G).

2

Exercise 2 consists of one staff of music in bass clef with a common time signature. It contains measures 1 through 4. The notes are: 1 (F), 2 (E), 3 (D), 4 (C).

## Long Tone 1

1a

Exercise 1a consists of two staves of music in bass clef with a common time signature. The first staff contains measures 1 through 7, and the second staff contains measures 8 through 14. The notes are: 1 (F), 2 (E), 3 (D), 4 (C), 5 (B), 6 (A), 7 (G), 8 (F), 9 (E), 10 (D), 11 (C), 12 (B), 13 (A), 14 (G).

1b

Exercise 1b consists of two staves of music in bass clef with a common time signature. The first staff contains measures 1 through 7, and the second staff contains measures 8 through 14. The notes are: 1 (F), 2 (E), 3 (D), 4 (C), 5 (B), 6 (A), 7 (G), 8 (F), 9 (E), 10 (D), 11 (C), 12 (B), 13 (A), 14 (G).

1c

Exercise 1c consists of two staves of music in bass clef with a common time signature. The first staff contains measures 1 through 5, and the second staff contains measures 6 through 10. The notes are: 1 (F), 2 (E), 3 (D), 4 (C), 5 (B), 6 (A), 7 (G), 8 (F), 9 (E), 10 (D).

1d

Exercise 1d consists of two staves of music in bass clef with a common time signature. The first staff contains measures 1 through 6, and the second staff contains measures 7 through 11. The notes are: 1 (F), 2 (E), 3 (D), 4 (C), 5 (B), 6 (A), 7 (G), 8 (F), 9 (E), 10 (D), 11 (C).

Long Tone 2

Long Tone 3

3a intervals of a minor 2nd

intervals of a major 2nd

intervals of a minor 3rd

intervals of a major 3rd

intervals of a perfect 4th

intervals of an augmented 4th

intervals of a perfect 5th

3b intervals of a minor 2nd

intervals of a major 2nd

intervals of a minor 3rd

intervals of a major 3rd

intervals of a perfect 4th

intervals of an augmented 4th

# Warm-Up Set 1

## Options 1, 2, & 3

Musical notation for Options 1, 2, & 3, consisting of three staves of bass clef music in 4/4 time. The first staff contains measures 1-5, the second staff contains measures 6-10, and the third staff contains measures 11-14. The music features various rhythmic patterns and melodic lines, with some measures containing slurs and ties.

## Option 4

Musical notation for Option 4, consisting of three staves of bass clef music in 4/4 time. The first staff contains measures 1-5, the second staff contains measures 6-10, and the third staff contains measures 11-14. The music features various rhythmic patterns and melodic lines, with some measures containing slurs and ties.

## Option 5

Musical notation for Option 5, consisting of three staves of bass clef music in 4/4 time. The first staff contains measures 1-5, the second staff contains measures 6-10, and the third staff contains measures 11-14. The music features various rhythmic patterns and melodic lines, with some measures containing slurs and ties.



# Warm-Up Set 2

## Options 1, 2, & 3

Options 1, 2, & 3

This section contains three staves of musical notation in bass clef, 6/8 time. The first staff contains measures 1 through 5, the second staff contains measures 6 through 10, and the third staff contains measures 11 through 14. The music features a sequence of eighth and quarter notes with various accidentals (flats and naturals) and is marked with slurs.

## Option 4

Option 4

This section contains three staves of musical notation in bass clef, 6/8 time. The first staff contains measures 1 through 5, the second staff contains measures 6 through 10, and the third staff contains measures 11 through 14. The music features a sequence of eighth and quarter notes with various accidentals (flats, naturals, and sharps) and is marked with slurs.

## Option 5

Option 5

This section contains three staves of musical notation in bass clef, 6/8 time. The first staff contains measures 1 through 5, the second staff contains measures 6 through 10, and the third staff contains measures 11 through 14. The music features a sequence of eighth and quarter notes with various accidentals (flats, naturals, and sharps) and is marked with slurs.

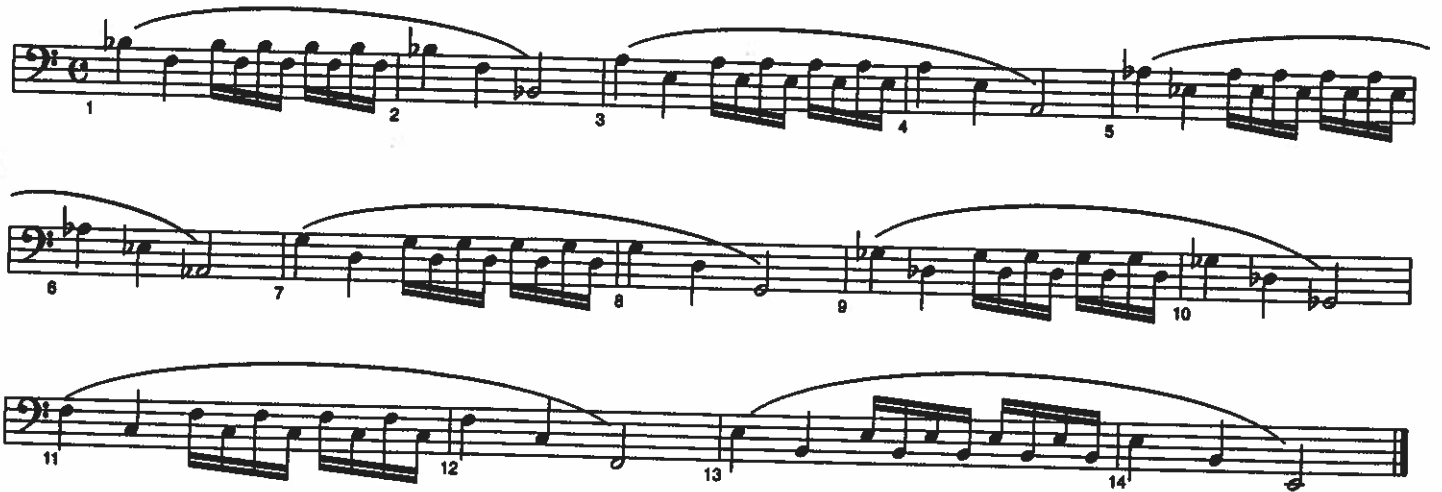
# Warm-Up Set 3

## Options 1, 2, & 3



Musical notation for Options 1, 2, & 3, consisting of three staves of music. The first staff contains measures 1 through 5, the second staff contains measures 6 through 10, and the third staff contains measures 11 through 14. The music is written in bass clef with a key signature of one flat (B-flat) and a common time signature (C). It features a series of eighth and sixteenth notes, often beamed together, with various slurs and accents.

## Option 4



Musical notation for Option 4, consisting of three staves of music. The first staff contains measures 1 through 5, the second staff contains measures 6 through 10, and the third staff contains measures 11 through 14. The music is written in bass clef with a key signature of one flat (B-flat) and a common time signature (C). It features a series of eighth and sixteenth notes, often beamed together, with various slurs and accents.

## Option 5



Musical notation for Option 5, consisting of three staves of music. The first staff contains measures 1 through 5, the second staff contains measures 6 through 10, and the third staff contains measures 11 through 14. The music is written in bass clef with a key signature of one flat (B-flat) and a common time signature (C). It features a series of eighth and sixteenth notes, often beamed together, with various slurs and accents.

# Warm-Up Set 4

Options 1, 2, & 3 - fingerings indicated in parenthesis

Options 1, 2, & 3 - fingerings indicated in parenthesis

1 (2-4 or 1-2-3) 2 3 (4 or 1-3) 4 5 (2-3)

6 7 (1-2) 8 9 (1) 10

11 (2) 12 13 (Open) 14

Option 4 - fingerings indicated in parenthesis

Option 4 - fingerings indicated in parenthesis

1 (2-4 or 1-2-3) 2 3 (4 or 1-3) 4 5 (2-3)

6 7 (1-2) 8 9 (1) 10

11 (2) 12 13 (Open) 14

Option 5 - fingerings indicated in parenthesis

Option 5 - fingerings indicated in parenthesis

1 (2-4 or 1-2-3) 2 3 (4 or 1-3) 4

5 (2-3) 6 7 (1-2) 8

9 (1) 10 11 (2) 12

13

# Technical Exercises in the Key of B $\flat$

## Major Scale

Musical notation for the Major Scale in B $\flat$  major, 4/4 time. The notation consists of two staves. The upper staff contains a melodic line starting with a whole rest, followed by quarter notes: B $\flat$ , C, D, E, F, G, A, B $\flat$ . The lower staff contains a bass line starting with a whole rest, followed by quarter notes: B $\flat$ , A, G, F, E, D, C, B $\flat$ . The piece concludes with a whole note chord of B $\flat$  major in both staves.

## Natural Minor

Musical notation for the Natural Minor scale in B $\flat$  minor, 4/4 time. The notation consists of two staves. The upper staff contains a melodic line starting with a whole rest, followed by quarter notes: B $\flat$ , C, D, E $\flat$ , F, G, A $\flat$ , B $\flat$ . The lower staff contains a bass line starting with a whole rest, followed by quarter notes: B $\flat$ , A, G, F, E, D, C, B $\flat$ . The piece concludes with a whole note chord of B $\flat$  minor in both staves.

## Harmonic Minor

Musical notation for the Harmonic Minor scale in B $\flat$  minor, 4/4 time. The notation consists of two staves. The upper staff contains a melodic line starting with a whole rest, followed by quarter notes: B $\flat$ , C, D, E $\flat$ , F, G, A $\flat$ , B $\flat$ . The lower staff contains a bass line starting with a whole rest, followed by quarter notes: B $\flat$ , A, G, F, E, D, C, B $\flat$ . The piece concludes with a whole note chord of B $\flat$  minor in both staves.

## Melodic Minor

Musical notation for the Melodic Minor scale in B $\flat$  minor, 4/4 time. The notation consists of two staves. The upper staff contains a melodic line starting with a whole rest, followed by quarter notes: B $\flat$ , C, D, E $\flat$ , F, G, A $\flat$ , B $\flat$ . The lower staff contains a bass line starting with a whole rest, followed by quarter notes: B $\flat$ , A, G, F, E, D, C, B $\flat$ . The piece concludes with a whole note chord of B $\flat$  minor in both staves.

## Mini-Scale & Tonic Arpeggio

Musical notation for the Mini-Scale & Tonic Arpeggio in B $\flat$  major, 4/4 time. The notation consists of two staves. The upper staff contains a melodic line starting with a whole rest, followed by quarter notes: B $\flat$ , C, D, E, F, G, A, B $\flat$ . The lower staff contains a bass line starting with a whole rest, followed by quarter notes: B $\flat$ , A, G, F, E, D, C, B $\flat$ . The piece concludes with a whole note chord of B $\flat$  major in both staves.

## Scale Pattern \*articulations:

Scale pattern with articulations in B $\flat$  major, 4/4 time. The notation shows a single staff with a melodic line starting with a whole rest, followed by quarter notes: B $\flat$ , C, D, E, F, G, A, B $\flat$ . The notes are grouped into pairs with slurs and accents, and numbered 1 through 8.

Musical notation for the Scale Pattern with articulations in B $\flat$  major, 4/4 time. The notation consists of two staves. The upper staff contains a melodic line starting with a whole rest, followed by quarter notes: B $\flat$ , C, D, E, F, G, A, B $\flat$ . The lower staff contains a bass line starting with a whole rest, followed by quarter notes: B $\flat$ , A, G, F, E, D, C, B $\flat$ . The piece concludes with a whole note chord of B $\flat$  major in both staves.

Scale Pattern 2\*

Musical notation for Scale Pattern 2\* in bass clef, 6/8 time. The piece consists of two staves. The upper staff features a continuous eighth-note scale pattern. The lower staff provides a harmonic accompaniment with a similar eighth-note pattern.

Scale in Thirds\*

Musical notation for Scale in Thirds\* in bass clef, 6/8 time. The upper staff plays a scale in thirds, while the lower staff plays a corresponding eighth-note accompaniment.

Interval Study

Musical notation for Interval Study in bass clef, 6/8 time. The piece consists of a single staff with a sequence of eighth-note intervals.

Triads of the Bb Scale

Musical notation for Triads of the Bb Scale in bass clef, 6/8 time. The piece consists of a single staff showing triads labeled I through VII.

Chord Study 1\*

Musical notation for Chord Study 1\* in bass clef, 6/8 time. The piece consists of two staves. The upper staff features six numbered eighth-note patterns, and the lower staff provides a harmonic accompaniment.

Chord Study 2 - articulations:

Musical notation for Chord Study 2 - articulations in bass clef, 6/8 time. The piece consists of two staves. The upper staff features eighth-note patterns with articulation marks (accents) and triplets, and the lower staff provides a harmonic accompaniment.

# Baritone



## Go Big Gold III

C instruments: Bb Ab G Gb F

## The Hey Song

Baritone

arr. J. Keltner



Baritone

Vela School Song (Eb)

[Composer]

♩ = 90

A single staff of music in bass clef, Eb major, 4/4 time. It contains 8 measures of music. The notes are: G2, A2, Bb2, C3, D3, E3, F3, G3, A3, Bb3, C4, D4, E4, F4, G4, A4, Bb4, C5.

9

A single staff of music in bass clef, Eb major, 4/4 time. It contains 8 measures of music. The notes are: G3, A3, Bb3, C4, D4, E4, F4, G4, A4, Bb4, C5, D5, E5, F5, G5, A5, Bb5, C6.

# Baritone

# Vela Fight Song

arr. Philippus

2 3 4 5 6 7 8

9 *f* 10 11 12 13 14 15 > 16

17 18 19 20 21 22 23 24

25 > 26 > 27 > 28 29 30 > 31 > 32 >



# ANOTHER ONE BITES THE DUST

BARITONE B.C.

Words and Music by JOHN DEACON  
Arranged by MICHAEL SWEENEY

Dirty Rock

Musical score for 'Another One Bites the Dust' in 4/4 time, Baritone B.C. The score consists of six staves of music. The first staff starts with a dynamic marking of *f*. The second staff has a measure 9 box and a dynamic marking of *mf*. The third staff has a measure 17 box and a dynamic marking of *f*. The fourth staff has measure 25 and 3 boxes and a dynamic marking of *mf*. The fifth staff has a measure 31 box. The sixth staff has a measure 39 box and three accents (^) over the final notes.

# WE WILL ROCK YOU

13

BARITONE B.C.

Words and Music by BRIAN MAY  
Arranged by MICHAEL SWEENEY

Loud Rock

Musical score for 'We Will Rock You' in 4/4 time, Baritone B.C. The score consists of six staves of music. The first staff starts with a dynamic marking of *ff* and includes a measure 5 box, a 'Clap' instruction, and a 'Stomp feet' instruction. The second staff has a 'Play' instruction and a dynamic marking of *f*. The third staff has a measure 13 box. The fourth staff has measure 21 boxes and dynamic markings of *mf* and *f*. The fifth staff has a measure 27 box. The sixth staff has a measure 35 box and a dynamic marking of *ff*.