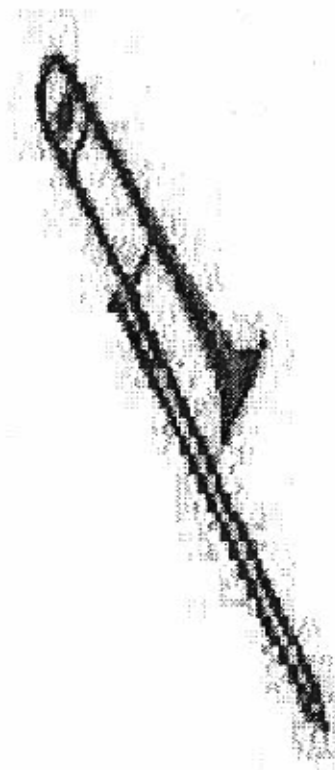


Name _____

Band _____

Trombone



Trombone Position Chart

Notes on gray background are pedal tones.

F	F#	Gb	G	G#	Ab	A	A#	Bb
6	5	4	3	2	1			

B	C	C#	Db	D	D#	Eb	E	F
Tb7 (lip down)	T7	T6	Tb4	Tb3	7 or T2	6 or T1		

F#	Gb	G	G#	Ab	A	A#	Bb	B	C
5	4 or Tb6	3 or T6	2 or Tb4	1 or Tb3	7 or Tb2	6 or T1			

C#	Db	D	D#	Eb	E	F	F#	Gb	G
5	4	3	2 or 7	1 or 6	5	4			

G#	Ab	A	A#	Bb	B	C	C#	Db
3 or 7	2 or 6	1 or #5	4 or b7	3 or b6	2 or b5			

D	D#	Eb	E	F	F#	Gb	G
1 or b4	3 or #6	2 or #5	1 or #4 or 6	#3 or 5 or 7	#2 or 4 or 6		

G#	Ab	A	A#	Bb	B	C	D
3 or 5 or 7	2 or 4 or 6	1 or 3 or 5	2 or 4	3 or b1 or 6	1 or b4		

(When more than one position is shown, the first is the most common.)

Region 28 Middle School All-Valley Scales

(Must be played by memory)

Trombone/Baritone

♩ = 120

Concert C



Concert F



Concert Bb



Concert Eb



Concert Ab



Concert Db



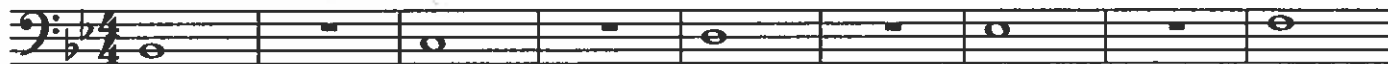
Concert G



Chromatic ♩ = 88



Trombone



10



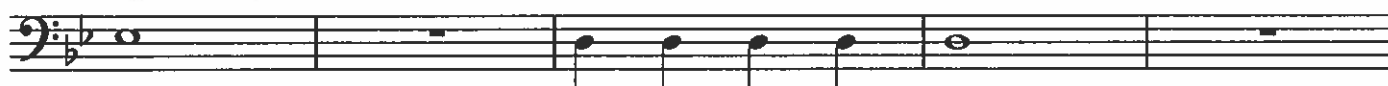
18



26



34



39



Articulation Exercises

Articulations: A Study in Styles

Four connected quarter-notes (tenuto). The sound of one note "touches" the next note.

Four quarter-notes in "lifted" style. The attack is the same as tenuto, but the end of the note is tapered.

Four quarter-notes "lifted and short" (staccato). Separated and detached (half full value).

A musical staff in bass clef with a common time signature (C) containing four quarter notes. Below the staff are three sound wave diagrams: the first shows a continuous, overlapping wave for connected notes; the second shows a wave that tapers to zero at the end of each note for lifted notes; the third shows four distinct, separated pulses for staccato notes.

Eighth-notes in connected style.

Eighth-notes in lifted and short style.

A musical staff in bass clef with a common time signature (C) containing eight eighth notes. Below the staff are two sound wave diagrams: the first shows a continuous wave for connected eighth notes; the second shows a wave that tapers at the end of each note for lifted eighth notes.

Eighth-note triplets in connected style.

Eighth-note triplets in a detached style (bounced).

A musical staff in bass clef with a common time signature (C) containing two groups of eighth-note triplets. The first group has four triplets in a connected style, and the second group has four triplets in a detached style. Above each triplet is a '3' indicating the triplet. Below the staff are two sound wave diagrams: the first shows a continuous wave for connected triplets; the second shows four distinct pulses for detached triplets.

Sixteenth-notes in a connected style.

A musical staff in bass clef with a common time signature (C) containing sixteen sixteenth notes. Below the staff is a sound wave diagram showing a continuous, dense wave for connected sixteenth notes.

Articulation Exercise on Concert F

A musical staff in bass clef with a common time signature (C) for an articulation exercise on Concert F. The staff is divided into measures numbered 1 through 20. Measures 1-5 contain quarter notes. Measures 6-10 contain eighth notes. Measures 11-14 contain eighth-note triplets. Measures 15-18 contain sixteenth-note triplets. Measure 19 contains sixteenth notes, and measure 20 contains a whole note. Above the staff, there are markings for articulation: 'opt. ending on whole note' appears above measures 5, 10, 14, and 18. Below the staff, there are sound wave diagrams corresponding to the notes in each measure, showing various articulation styles like connected, lifted, and detached.

Long Tones

Concert F Descending

1

Exercise 1 consists of two staves of music in bass clef with a common time signature. The first staff contains measures 1 through 7, and the second staff contains measures 8 through 14. The notes are: 1 (F), 2 (E), 3 (D), 4 (C), 5 (B), 6 (A), 7 (G), 8 (F), 9 (E), 10 (D), 11 (C), 12 (B), 13 (A), 14 (G).

2

Exercise 2 consists of one staff of music in bass clef with a common time signature. It contains measures 1 through 4. The notes are: 1 (F), 2 (E), 3 (D), 4 (C).

Long Tone 1

1a

Exercise 1a consists of two staves of music in bass clef with a common time signature. The first staff contains measures 1 through 7, and the second staff contains measures 8 through 14. The notes are: 1 (F), 2 (E), 3 (D), 4 (C), 5 (B), 6 (A), 7 (G), 8 (F), 9 (E), 10 (D), 11 (C), 12 (B), 13 (A), 14 (G).

1b

Exercise 1b consists of two staves of music in bass clef with a common time signature. The first staff contains measures 1 through 7, and the second staff contains measures 8 through 14. The notes are: 1 (F), 2 (E), 3 (D), 4 (C), 5 (B), 6 (A), 7 (G), 8 (F), 9 (E), 10 (D), 11 (C), 12 (B), 13 (A), 14 (G).

1c

Exercise 1c consists of two staves of music in bass clef with a common time signature. The first staff contains measures 1 through 5, and the second staff contains measures 6 through 10. The notes are: 1 (F), 2 (E), 3 (D), 4 (C), 5 (B), 6 (A), 7 (G), 8 (F), 9 (E), 10 (D).

1d

Exercise 1d consists of two staves of music in bass clef with a common time signature. The first staff contains measures 1 through 6, and the second staff contains measures 7 through 12. The notes are: 1 (F), 2 (E), 3 (D), 4 (C), 5 (B), 6 (A), 7 (G), 8 (F), 9 (E), 10 (D), 11 (C), 12 (B).

Long Tone 2

Musical notation for Long Tone 2, bass clef, 26 measures. The notes are: 1 (F2), 2 (F2), 3 (G2), 4 (G2), 5 (A2), 6 (A2), 7 (B2), 8 (B2), 9 (C3), 10 (C3), 11 (D3), 12 (D3), 13 (E3), 14 (E3), 15 (F3), 16 (F3), 17 (G3), 18 (G3), 19 (A3), 20 (A3), 21 (B3), 22 (B3), 23 (C4), 24 (C4), 25 (D4), 26 (D4).

Long Tone 3

3a intervals of a minor 2nd

intervals of a major 2nd

Musical notation for Long Tone 3a, measures 1-8. Notes: 1 (F2), 2 (G2), 3 (A2), 4 (B2), 5 (C3), 6 (D3), 7 (E3), 8 (F3).

intervals of a minor 3rd

intervals of a major 3rd

Musical notation for Long Tone 3a, measures 9-16. Notes: 9 (G2), 10 (A2), 11 (B2), 12 (C3), 13 (D3), 14 (E3), 15 (F3), 16 (G3).

intervals of a perfect 4th

intervals of an augmented 4th

Musical notation for Long Tone 3a, measures 17-24. Notes: 17 (A2), 18 (B2), 19 (C3), 20 (D3), 21 (E3), 22 (F3), 23 (G3), 24 (A3).

intervals of a perfect 5th

Musical notation for Long Tone 3a, measures 25-28. Notes: 25 (B2), 26 (C3), 27 (D3), 28 (E3).

3b intervals of a minor 2nd

intervals of a major 2nd

intervals of a minor 3rd

Musical notation for Long Tone 3b, measures 1-6. Notes: 1 (F2), 2 (G2), 3 (A2), 4 (B2), 5 (C3), 6 (D3).

intervals of a major 3rd

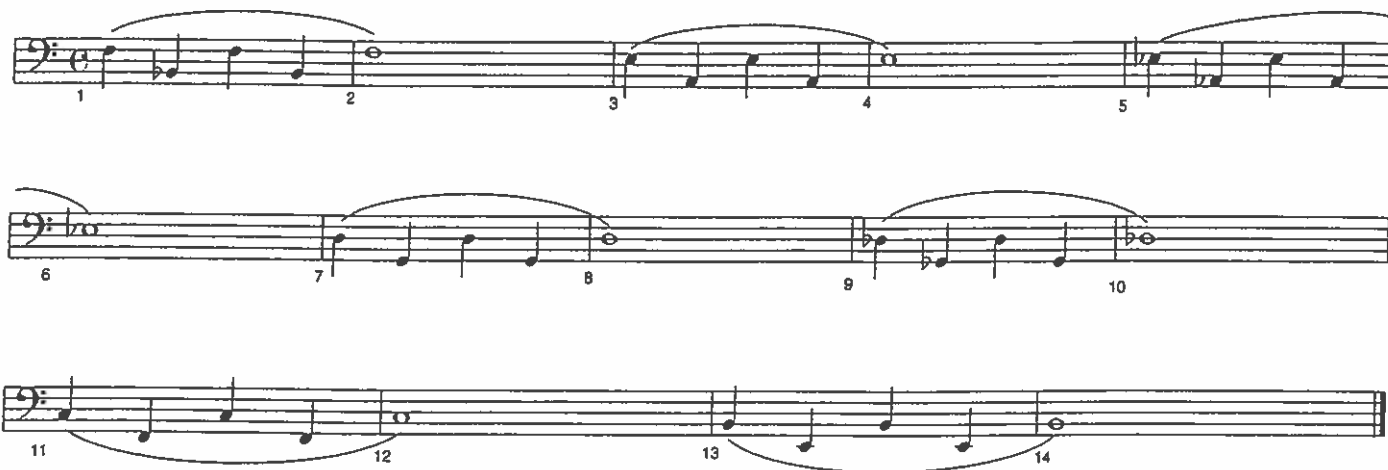
intervals of a perfect 4th

intervals of an augmented 4th

Musical notation for Long Tone 3b, measures 7-12. Notes: 7 (E3), 8 (F3), 9 (G3), 10 (A3), 11 (B3), 12 (C4).


Warm-Up Set 1

Options 1, 2, & 3



Musical notation for Options 1, 2, & 3, consisting of three staves of music. The first staff contains measures 1 through 5, the second staff contains measures 6 through 10, and the third staff contains measures 11 through 14. The notation includes various rhythmic values and phrasing slurs.

Option 4



Musical notation for Option 4, consisting of three staves of music. The first staff contains measures 1 through 5, the second staff contains measures 6 through 10, and the third staff contains measures 11 through 14. The notation includes various rhythmic values and phrasing slurs.

Option 5



Musical notation for Option 5, consisting of three staves of music. The first staff contains measures 1 through 5, the second staff contains measures 6 through 10, and the third staff contains measures 11 through 14. The notation includes various rhythmic values and phrasing slurs.

Warm-Up Set 2

Options 1, 2, & 3

Musical notation for Options 1, 2, & 3, consisting of three staves of bass clef music in 4/4 time. The first staff contains measures 1-5, the second staff contains measures 6-10, and the third staff contains measures 11-14. The music features a sequence of eighth and quarter notes with various accidentals (flats and naturals) and slurs.

Option 4

Musical notation for Option 4, consisting of three staves of bass clef music in 4/4 time. The first staff contains measures 1-5, the second staff contains measures 6-10, and the third staff contains measures 11-14. The music features a sequence of eighth and quarter notes with various accidentals (flats, naturals, and sharps) and slurs.

Option 5

Musical notation for Option 5, consisting of three staves of bass clef music in 4/4 time. The first staff contains measures 1-5, the second staff contains measures 6-10, and the third staff contains measures 11-14. The music features a sequence of eighth and quarter notes with various accidentals (flats, naturals, and sharps) and slurs.

Technical Exercises in the Key of B \flat

Major Scale

Musical notation for the Major Scale exercise in B \flat major, 4/4 time. The exercise consists of two staves. The upper staff contains an ascending line starting with a whole rest, followed by quarter notes: B \flat , C, D, E, F, G, A, B \flat . The lower staff contains a descending line starting with a whole rest, followed by quarter notes: A, G, F, E, D, C, B \flat , A. The piece concludes with a whole note B \flat on both staves.

Natural Minor

Musical notation for the Natural Minor scale exercise in B \flat minor, 4/4 time. The exercise consists of two staves. The upper staff contains an ascending line starting with a whole rest, followed by quarter notes: B \flat , C, D, E \flat , F, G, A, B \flat . The lower staff contains a descending line starting with a whole rest, followed by quarter notes: A, G, F, E \flat , D, C, B \flat , A. The piece concludes with a whole note B \flat on both staves.

Harmonic Minor

Musical notation for the Harmonic Minor scale exercise in B \flat minor, 4/4 time. The exercise consists of two staves. The upper staff contains an ascending line starting with a whole rest, followed by quarter notes: B \flat , C, D, E \flat , F, G, A, B \flat . The lower staff contains a descending line starting with a whole rest, followed by quarter notes: A, G, F, E \flat , D, C, B \flat , A. The piece concludes with a whole note B \flat on both staves.

Melodic Minor

Musical notation for the Melodic Minor scale exercise in B \flat minor, 4/4 time. The exercise consists of two staves. The upper staff contains an ascending line starting with a whole rest, followed by quarter notes: B \flat , C, D, E \flat , F, G, A, B \flat . The lower staff contains a descending line starting with a whole rest, followed by quarter notes: A, G, F, E \flat , D, C, B \flat , A. The piece concludes with a whole note B \flat on both staves.

Mini-Scale & Tonic Arpeggio

Musical notation for the Mini-Scale & Tonic Arpeggio exercise in B \flat major, 4/4 time. The exercise consists of two staves. The upper staff contains eighth-note patterns: B \flat -C-D-E-F-G-A-B \flat , C-D-E-F-G-A-B \flat , D-E-F-G-A-B \flat , E-F-G-A-B \flat , and a final quarter note B \flat . The lower staff contains eighth-note patterns: B \flat -C-D-E-F-G-A-B \flat , C-D-E-F-G-A-B \flat , D-E-F-G-A-B \flat , E-F-G-A-B \flat , and a final quarter note B \flat . The piece concludes with a tonic arpeggio (B \flat -D-F-A) on both staves.

Scale Pattern *articulations:

Musical notation for the Scale Pattern exercise in B \flat major, 4/4 time. The exercise consists of two staves. The upper staff contains eighth-note patterns: B \flat -C-D-E-F-G-A-B \flat , C-D-E-F-G-A-B \flat , D-E-F-G-A-B \flat , E-F-G-A-B \flat , and a final quarter note B \flat . The lower staff contains eighth-note patterns: B \flat -C-D-E-F-G-A-B \flat , C-D-E-F-G-A-B \flat , D-E-F-G-A-B \flat , E-F-G-A-B \flat , and a final quarter note B \flat .

*Scale Pattern 2**

Musical notation for Scale Pattern 2* in bass clef, 6/8 time. The piece consists of two staves. The upper staff features a continuous eighth-note scale pattern, while the lower staff provides a rhythmic accompaniment of eighth notes.

*Scale in Thirds**

Musical notation for Scale in Thirds* in bass clef, 6/8 time. The upper staff plays a scale in thirds, and the lower staff plays a corresponding eighth-note accompaniment.

Interval Study

Musical notation for Interval Study in bass clef, 6/8 time. The piece consists of a single staff with eighth-note intervals.

Triads of the B♭ Scale

Musical notation for Triads of the B♭ Scale in bass clef, 6/8 time. The piece consists of a single staff showing the seven triads of the B♭ scale, labeled I, ii, iii, IV, V, vi, and vii^o.

*Chord Study 1**

Musical notation for Chord Study 1* in bass clef, 6/8 time. The piece consists of two staves. The upper staff features six numbered eighth-note patterns, and the lower staff provides a rhythmic accompaniment.

Chord Study 2 - articulations:

Musical notation for Chord Study 2 - articulations in bass clef, 6/8 time. The piece consists of two staves. The upper staff features six numbered eighth-note patterns with articulation marks, and the lower staff provides a rhythmic accompaniment.

ANOTHER ONE BITES THE DUST

Words and Music by JOHN DEACON
Arranged by MICHAEL SWEENEY

TROMBONE

Dirty Rock

Musical score for Trombone of "Another One Bites the Dust". The score is written in bass clef with a 4/4 time signature. It begins with a dynamic marking of *f* and a tempo/style marking of "Dirty Rock". The score consists of six staves of music. Measure numbers 9, 17, 25, 31, and 39 are indicated in boxes above the staff. Dynamic markings include *f*, *mf*, and *f*. There is a triplet of eighth notes in measure 25 and three accents (^) over the final three notes of the piece.

WE WILL ROCK YOU

TROMBONE

Words and Music by BRIAN MAY
Arranged by MICHAEL SWEENEY

Loud Rock

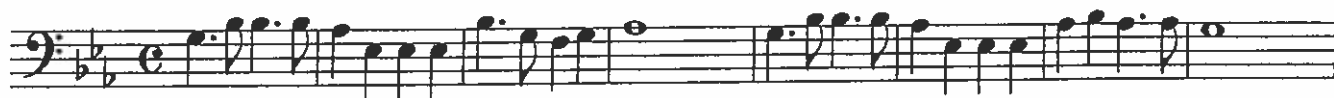
Musical score for Trombone of "We Will Rock You". The score is written in bass clef with a 4/4 time signature. It begins with a dynamic marking of *ff* and a tempo/style marking of "Loud Rock". The score consists of six staves of music. Measure numbers 5, 13, 21, 27, and 35 are indicated in boxes above the staff. Performance instructions include "Stomp feet" and "Clap" in measure 5, and "Play" in measure 13. Dynamic markings include *ff*, *f*, *mf*, and *f*. There are accents (^) over many notes throughout the score.

Trombone

Vela School Song (Eb)

[Composer]

 = 90



9



Trombone 2

Vela Fight Song

arr. Philippus

2 3 4 5 6 7 8

9 *f* 10 11 12 13 14 15 16

17 18 19 20 21 22 23 24

25 26 27 28 29 30 31 32