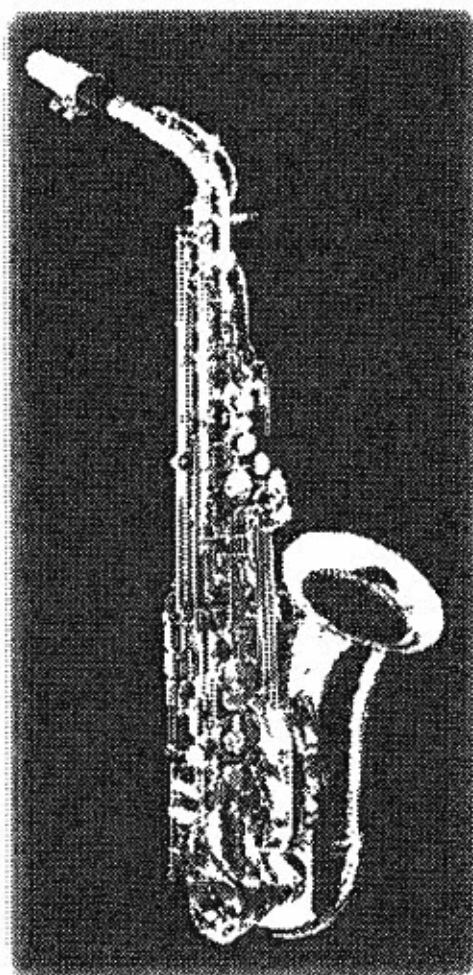


Name \_\_\_\_\_

Band \_\_\_\_\_

# Eb Alto Saxophone



# E♭ Alto Saxophone Fingering Chart

A $\sharp$	B $\flat$	B	C	C $\sharp$	D $\flat$	D	D $\sharp$	E $\flat$	E
F	F $\sharp$	G $\flat$	G	G $\sharp$	A $\flat$	A	A $\sharp$ B $\flat$		
B	C	C $\sharp$	D $\flat$	D	D $\sharp$	E $\flat$	E	F	
F $\sharp$	G $\flat$	G	G $\sharp$	A $\flat$	A	A $\sharp$	B $\flat$	B	
C	C $\sharp$	D $\flat$	D	D $\sharp$	E $\flat$	E	F		

(Notes on gray background are suggested altissimo fingerings.)

C	C $\sharp$	D $\flat$	D	D $\sharp$	E $\flat$	E	F

(When more than one fingering is shown, the first is the most common.)

# Region 28 Middle School All-Valley Scales

(Must be played by memory)

## Alto/Bari Saxophone

♩ = 120

Concert C (A Major)



Concert F (D Major)



Concert Bb (G Major)



Concert Eb (C Major)



Concert Ab (F Major)



Concert Db (Bb Major)



Concert G (E Major)



Chromatic ♩. = 88



# Alto Saxophone



# 4 Alto Saxophone

## Long Tones

### Concert F Descending

1

Two staves of music for exercise 1. The first staff contains measures 1 through 7, and the second staff contains measures 8 through 14. The key signature has one flat (Bb) and the time signature is common time (C). The notes are: 1 (F), 2 (E), 3 (D), 4 (C), 5 (Bb), 6 (Ab), 7 (G), 8 (F), 9 (E), 10 (D), 11 (C), 12 (Bb), 13 (Ab), 14 (G).

2

One staff of music for exercise 2, containing measures 1 through 4. The notes are: 1 (F), 2 (E), 3 (D), 4 (C).

### Long Tone 1

1a

Two staves of music for exercise 1a. The first staff contains measures 1 through 7, and the second staff contains measures 8 through 14. The key signature has one flat (Bb) and the time signature is common time (C). The notes are: 1 (F), 2 (E), 3 (D), 4 (C), 5 (Bb), 6 (Ab), 7 (G), 8 (F), 9 (E), 10 (D), 11 (C), 12 (Bb), 13 (Ab), 14 (G).

1b

Two staves of music for exercise 1b. The first staff contains measures 1 through 7, and the second staff contains measures 8 through 14. The key signature has one flat (Bb) and the time signature is common time (C). The notes are: 1 (F), 2 (E), 3 (D), 4 (C), 5 (Bb), 6 (Ab), 7 (G), 8 (F), 9 (E), 10 (D), 11 (C), 12 (Bb), 13 (Ab), 14 (G).

1c

Two staves of music for exercise 1c. The first staff contains measures 1 through 5, and the second staff contains measures 6 through 10. The key signature has one flat (Bb) and the time signature is common time (C). The notes are: 1 (F), 2 (E), 3 (D), 4 (C), 5 (Bb), 6 (Ab), 7 (G), 8 (F), 9 (E), 10 (D).

1d

Two staves of music for exercise 1d. The first staff contains measures 1 through 6, and the second staff contains measures 7 through 12. The key signature has one flat (Bb) and the time signature is common time (C). The notes are: 1 (F), 2 (E), 3 (D), 4 (C), 5 (Bb), 6 (Ab), 7 (G), 8 (F), 9 (E), 10 (D), 11 (C), 12 (Bb).

# Articulation Exercises

## Articulations: A Study in Styles

Four connected quarter-notes (tenuto). The sound of one note "touches" the next note.

Four quarter-notes in "lifted" style. The attack is the same as tenuto, but the end of the note is tapered.

Four quarter-notes "lifted and short" (staccato). Separated and detached (half full value).

A musical staff in treble clef with a common time signature (C). It contains four groups of four quarter notes. Below the staff are four corresponding diagrams: the first is a solid bar with vertical lines; the second is a bar with rounded ends; the third is a bar with gaps between notes; the fourth is a bar with gaps and shorter note heads.

Eighth-notes in connected style.

Eighth-notes in lifted and short style.

A musical staff in treble clef with a common time signature (C). It contains two groups of eight eighth notes. Below the staff are two diagrams: the first is a solid bar with vertical lines; the second is a bar with gaps and shorter note heads.

Eighth-note triplets in connected style.

Eighth-note triplets in a detached style (bounced).

A musical staff in treble clef with a common time signature (C). It contains two groups of eighth-note triplets. Above each group is a '3' indicating the triplet. Below the staff are two diagrams: the first is a solid bar with vertical lines; the second is a bar with gaps and shorter note heads.

Sixteenth-notes in a connected style.

A musical staff in treble clef with a common time signature (C). It contains a group of sixteen sixteenth notes. Below the staff is a diagram showing a solid bar with vertical lines.

## Articulation Exercise on Concert F

A musical staff in treble clef with a common time signature (C). It contains 20 measures of music, numbered 1 through 20. The first measure is a whole note F. Measures 2-5 are quarter notes. Measures 6-10 are eighth notes. Measures 11-14 are eighth-note triplets. Measures 15-18 are eighth-note triplets. Measure 19 is a sixteenth-note run. Measure 20 is a whole note F. There are three asterisks with the text '\* opt. ending on whole note' at the end of measures 10, 14, and 18.

**Long Tone 2**

Musical notation for Long Tone 2, consisting of four staves of music. The notes are numbered 1 through 28. The first staff contains notes 1-7, the second 8-14, the third 15-21, and the fourth 22-28. The notes are primarily half notes and quarter notes, often beamed together in pairs.

**Long Tone 3**

**3a** Intervals of a minor 2nd

Intervals of a major 2nd

Musical notation for Long Tone 3a, measures 1-8. Measures 1-4 show intervals of a minor 2nd, and measures 5-8 show intervals of a major 2nd.

Intervals of a minor 3rd

Intervals of a major 3rd

Musical notation for Long Tone 3a, measures 9-18. Measures 9-12 show intervals of a minor 3rd, and measures 13-18 show intervals of a major 3rd.

Intervals of a perfect 4th

Intervals of an augmented 4th

Musical notation for Long Tone 3a, measures 17-24. Measures 17-20 show intervals of a perfect 4th, and measures 21-24 show intervals of an augmented 4th.

Intervals of a perfect 5th

Musical notation for Long Tone 3a, measures 25-28, showing intervals of a perfect 5th.

**3b** Intervals of a minor 2nd

Intervals of a major 2nd

Intervals of a minor 3rd

Musical notation for Long Tone 3b, measures 1-6. Measures 1-2 show intervals of a minor 2nd, measures 3-4 show intervals of a major 2nd, and measures 5-6 show intervals of a minor 3rd.

Intervals of a major 3rd

Intervals of a perfect 4th

Intervals of an augmented 4th

Musical notation for Long Tone 3b, measures 7-12. Measures 7-8 show intervals of a major 3rd, measures 9-10 show intervals of a perfect 4th, and measures 11-12 show intervals of an augmented 4th.

# Warm-Up Set 1

## Option 1 (unison "lip slur" with brass)

Musical notation for Option 1, consisting of three staves of music. The first staff contains measures 1-5, the second staff contains measures 6-10, and the third staff contains measures 11-14. Each measure features a single note with a slur above it, indicating a lip slur technique.

## Option 2 (octave slur study with brass lip slur)

Musical notation for Option 2, consisting of three staves of music. The first staff contains measures 1-5, the second staff contains measures 6-10, and the third staff contains measures 11-14. Each measure features a single note with a slur above it and a dynamic marking (p or f) below it, indicating an octave slur study.

## Options 3, 4, & 5 (technical patterns with brass lip slurs)

Articulation Patterns:

Musical notation for Options 3, 4, & 5, consisting of four staves of music. The first staff contains measures 1-4, the second staff contains measures 5-8, the third staff contains measures 9-12, and the fourth staff contains measures 13-14. Each measure features a sequence of eighth notes with stems pointing up or down, used for articulation exercises.



## Warm-Up Set 2

### Option 1 (unison "lip slur" with brass)

### Option 2 (octave slur study with brass lip slur)

### Options 3, 4, & 5 (technical patterns with brass lip slurs)

Articulation Patterns:

## Warm-Up Set 3

### Option 1 (unison "lip slur" with brass)

### Option 2 (octave slur study with brass lip slur)

### Options 3, 4, & 5 (technical patterns with brass lip slurs)

Articulation Patterns: 1 2 3 4 5 6 7 8

# Warm-Up Set 4

## Option 1 (unison "lip slur" with brass)

## Option 2 (octave slur study with brass lip slur)

## Options 3, 4, & 5 (technical patterns with brass lip slurs)

Articulation Patterns:

*Technical Exercises in the Key of G (Concert Bb)*

*Major Scale*

This section contains four staves of musical notation, each representing a different scale in the key of G. The first staff is the Major Scale, the second is the Natural Minor, the third is the Harmonic Minor, and the fourth is the Melodic Minor. Each staff begins with a treble clef, a key signature of one sharp (F#), and a common time signature (C). The scales are written in a four-measure format, with the first measure containing a whole rest and the subsequent measures containing the scale notes.

*Mini-Scale & Tonic Arpeggio*

This section contains two staves of musical notation. The top staff features a melodic line with eighth-note runs and slurs, while the bottom staff provides a harmonic accompaniment with eighth-note patterns. The key signature is one sharp (F#) and the time signature is common time (C).

*Scale Pattern 1 \*articulations:*

This section contains two staves of musical notation. The top staff shows a melodic line with eighth-note runs, and the bottom staff shows a harmonic accompaniment with eighth-note patterns. The key signature is one sharp (F#) and the time signature is common time (C).

*Saxophones only-extended scale*

This section contains a single staff of musical notation for saxophones. It features an extended scale with eighth-note runs and slurs. The key signature is one sharp (F#) and the time signature is common time (C).

Scale Pattern 2\*

Musical notation for Scale Pattern 2\* in G major, 4/4 time. The piece consists of two staves. The upper staff features a melodic line with eighth-note patterns, and the lower staff provides a bass line with eighth-note accompaniment.

Scale in Thirds\*

Musical notation for Scale in Thirds\* in G major, 4/4 time. The upper staff contains a melodic line of eighth-note triplets, while the lower staff has a bass line of eighth-note triplets.

Interval Study

Musical notation for Interval Study in G major, 4/4 time. The upper staff shows a sequence of eighth-note intervals, and the lower staff provides a bass line.

Triads of the G Scale

Musical notation for Triads of the G Scale in G major, 4/4 time. The upper staff displays seven triads labeled I through vii<sup>o</sup>. The lower staff provides a bass line for each triad.

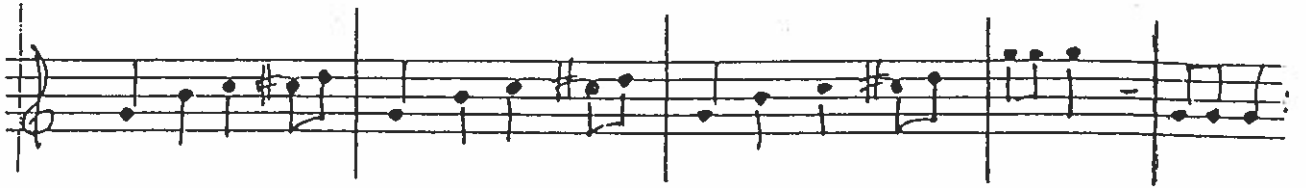
Chord Study 1\*

Musical notation for Chord Study 1\* in G major, 4/4 time. The upper staff features six eighth-note patterns, each starting with a finger number (1-6). The lower staff provides a bass line.

Chord Study 2 - articulations:

Musical notation for Chord Study 2 - articulations in G major, 4/4 time. The upper staff shows six eighth-note patterns with articulation marks and fingerings (1-5). The lower staff provides a bass line.

# Alto Saxophone



## Go Big Gold III

E♭ instruments: G F E E♭ D

## The Hey Song

Alto Saxophones 1-2

arr. J. Keltner



Alto Sax.

# Vela School Song (Eb)

[Composer]

$\bullet = 90$

9

# Alto Sax.

# Vela Fight Song

arr. Philippus

2 3 4 5 6 7 8

9 10 11 12 13 14 15 16

17 18 19 20 21 22 23 24

25 26 27 28 29 30 31 32



# ANOTHER ONE BITES THE DUST

Words and Music by JOHN DEACON  
Arranged by MICHAEL SWEENEY

E♭ ALTO SAX

Dirty Rock 4

# WE WILL ROCK YOU

E♭ ALTO SAX

Words and Music by BRIAN MAY  
Arranged by MICHAEL SWEENEY

Loud Rock